

# **WILTON RANCHERIA RESORT AND CASINO**

# HISTORY OF WILTON RANCHERIA

- Descendants of the Plains and Sierra Miwok who lived and prospered in the Sacramento Valley
- Party to the treaty signed at the Forks of the Cosumnes
- 18 California Treaties: **NONE** ratified by U.S. Congress



# HISTORY OF WILTON RANCHERIA

- 1928: U.S. acquired land in trust for the Miwok
- 38 acres in Sacramento County established the Wilton Rancheria
- 1958 Rancheria Act terminated federal trusts to 41 California Indian Tribes including Wilton Rancheria
- The Tribe lost Federal recognition in 1964
- Federal recognition restored in 2009
- Eligible for mandatory land-into-trust
- Tribal constitution passed in 2011

# WILTON RANCHERIA TRIBAL ELECTED OFFICIALS

Four branches of government: Chairperson, Tribal Council, General Council, Tribal Court



**Raymond Hitchcock**  
Chair



**Cammeron Hodson**  
Vice-Chair



**Jesus Tarango**  
Council Spokesperson



**Elizabeth Singh**  
Council Vice Spokesperson



**Dave Andrews**  
Council Member



**Tonya Caldwell**  
Council Member



**Annette Williams**  
Council Member



**Mark Andrews**  
Council Member



**Joseph Rangel**  
Council Member

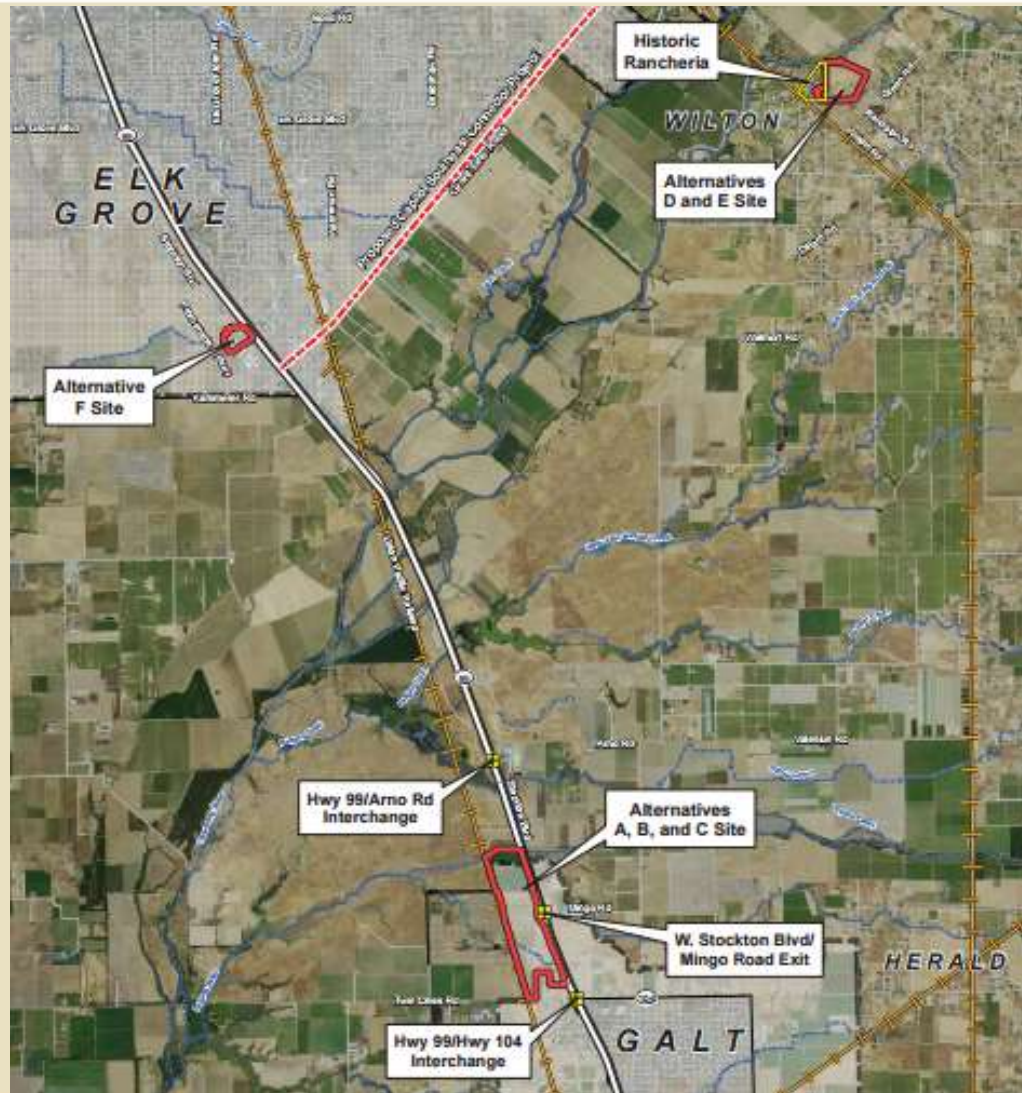
# TRIBAL PROFILE

- Over **700** members currently
- Over **62%** live in South Sacramento County
- **40%** of members under 18
- **60%** of tribal youth reside in Elk Grove Unified School District

## **Long-term effects of termination: poverty, health, & social problems**

- **62%** unemployment rate (U.S. average: 6.3%)
- **\$20,000** Median annual income (U.S. poverty line for family of four: \$24,000/yr.)
- **38%** without health insurance (U.S. average: 10.4%)
- **14%** College graduation rate (U.S. average: 34%)

# ALTERNATIVE SITES



# WHERE ARE WE IN THE PROCESS?



# **WILTON RANCHERIA RESORT & CASINO**

## **SITE PLANS AND RENDERINGS**



HIGHWAY 99

GRANT LINE RD

PROMENADE PKWY



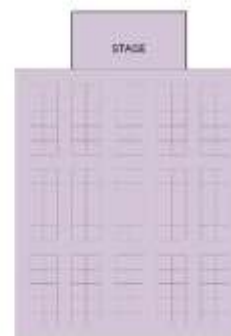




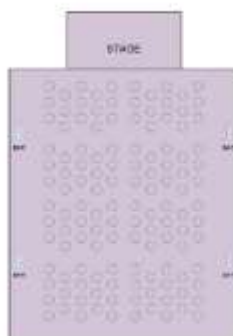
OUTSIDE EVENT



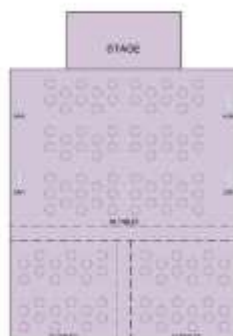
CONCERT  
3,200 seats



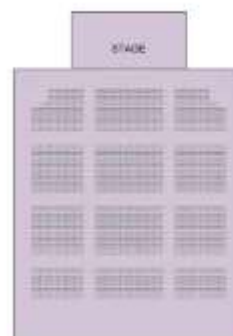
EXHIBITION  
(150) 10'x10' booths



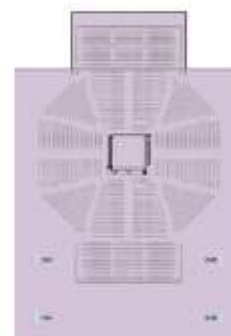
BANQUET 1  
126 tables  
1,260 guests



BANQUET 2  
114 tables  
1,140 guests



CLASSROOM  
550 training tables  
1,650 guests



BOXING / MMA  
2,500 guests  
740 Riser seats  
1,760 Floor seats



**BOYD**  
GAMING

ENTRY OPTION 1 - VIEW 1

MAY 24, 2018

**KLAI JUBA  
WALD**

KLAI JUBA WALD IS A TRADE NAME OF KLAI JUBA WALD LLC



**BOYD**  
GAMING

LOBBY - VIEW 2

MAY 24, 2014

**KLAI JUBA  
WALD**

KLAI JUBA WALD IS A TRADE NAME. BOYD GAMING IS NOT RESPONSIBLE FOR THE CONTENTS OF THIS DOCUMENT.





Howard Hughes  
 AN AMEREN GROUP COMPANY



## THE OUTLET COLLECTION AT ELK GROVE

04/11/2014





**BOYD**  
GAMING

EAST PERSPECTIVE - VIEW 3

MAY 24, 2014

**KLAI JUBA  
WALD**  
RECREATION  
CENTER



**BOYD**  
GAMING

FREEWAY - VIEW 6

MAY 31, 2014

**KLAI JUBA  
WALD**  
HOTEL & CASINO



**BOYD**  
GAMING

CENTRAL PLANT - VIEW 5

MAY 26, 2014

**KLAI JUBA  
WALD**

© 2014 KLAI JUBA WALD. ALL RIGHTS RESERVED.



**BOYD  
GAMING**

PARKING GARAGE - VIEW 4

MAY 24, 2014

**KLAI JUBA  
WALD**

ARCHITECT



**BOYD**  
GAMING

ENTRY OPTION 1 - VIEW 1

MAY 24, 2018

**KLAI JUBA  
WALD**  
KLAI JUBA WALD  
KLAI JUBA WALD

# OVERALL SITE USAGE

## Wilton Rancheria Resort & Casino and The Outlet Collection at Elk Grove

### **97.7% will consist of:**

- **302** hotel suites & guest rooms
- Spa & fitness area
- Restaurants & fine dining
- Ballroom, conference & entertainment venue
- Pool area, parking & landscaping
- Retail outlet stores
- Movie theatre and more

### **2.3% will be:**

- Casino floor

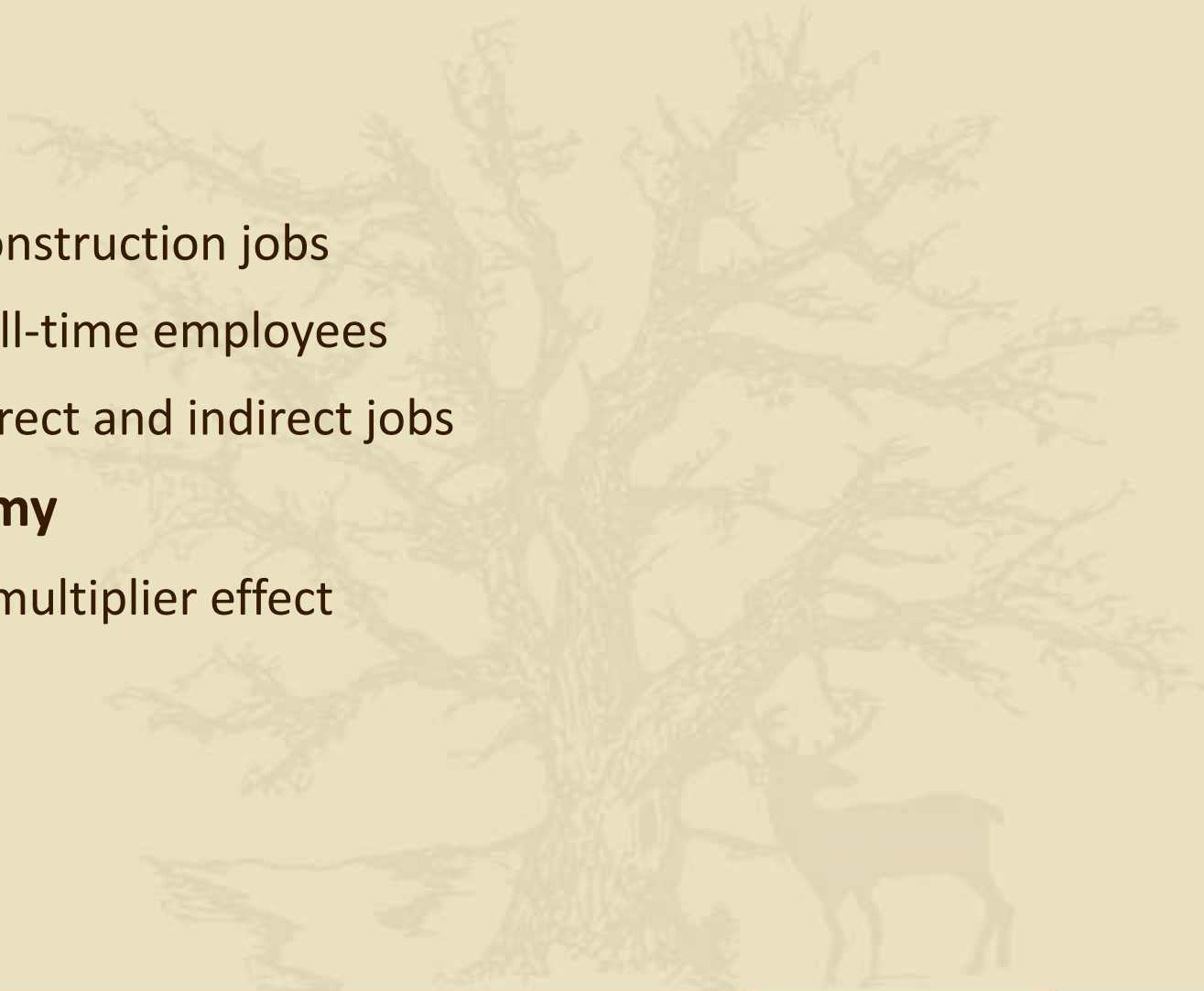
# ECONOMIC BENEFITS

## Local jobs

- 1,600 construction jobs
- 1,750 full-time employees
- 3,000 direct and indirect jobs

## Local economy

- Annual multiplier effect



# ECONOMIC BENEFITS

## Local vendors

- Building materials
- Transportation
- Retail
- Advertising, printing
- Laundry, waste & recycling disposal
- Food & beverage suppliers (farm-to-fork)

## More customers and tourists

- Entertainment, dining, hotel, meetings
- 2/3 spend at other local businesses

# COMMUNITY BENEFITS

## Annual service payments

- Law enforcement
- Fire protection
- Traffic improvements & roadway maintenance
- Utilities
- Social services programs



# COMMUNITY BENEFITS

## Philanthropic support

- Charities
- Youth sports
- School programs

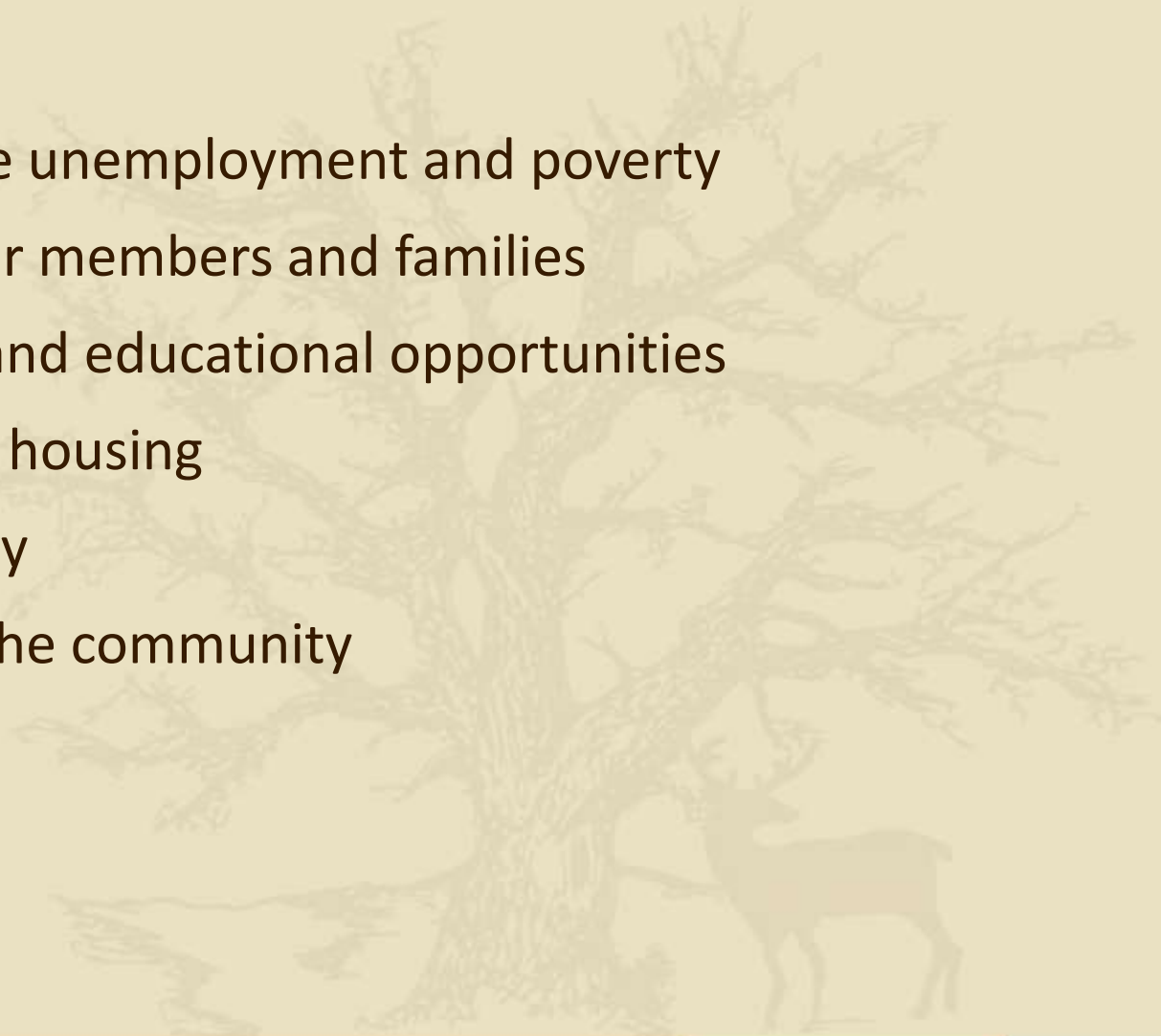
## Local events

- Banquets
- High school reunions
- Anniversary parties
- Chamber of Commerce
- Business retreats



# TRIBAL BENEFITS

- Jobs to reduce unemployment and poverty
- Health care for members and families
- Scholarships and educational opportunities
- Investment in housing
- Self-sufficiency
- Give back to the community



# BOYD GAMING

- Celebrating 40+ years: founded in 1975
- Culture of a family owned business
- Since the beginning, under the same leadership
- Committed to providing exceptional entertainment experiences to our guests every day: “Boyd Style”
- 22 properties in eight states, 15 communities

# A NATIONAL PRESENCE



# BOYD GAMING: GUIDING PRINCIPLES

- Complement the Surroundings
- Thoughtfully Integrate with the Community
- Minimize Development Impact
- Commit to the Environment
- Promote Economic Growth
- Generously Give Back
  - Community
  - Health & Human Services
  - Culture
  - Education



# A COMMUNITY LEADER

***“Boyd Gaming’s Treasure Chest Casino is a beloved part of the City of Kenner family and we welcome the growth and economic development it has created.”***

— Michael S. Yenni, President, Jefferson Parish,  
Louisiana

***“Worth County is definitely better off financially, economically, and more stable than before we had the casino. Diamond Jo has been a wonderful asset to the community.”***

— Ken Abrams, Worth County Supervisor, Worth County,  
Iowa

***“Mulvane is growing and Boyd Gaming’s Kansas Star Casino has undoubtedly played a large role in our city’s ability to lower taxes, improve our schools, and enjoy a greater quality of life.”***

— Mayor, Dr. Shelly Steadman, Mulvane, Kansas

